

## The Thermal Energy Influence on the Surface Layer of Construction Steels during Laser Beam Cutting

Martin Ovsik, Michal Stanek, Lenka Hylova, Miroslav Manas, Pavel Stoklasek

Tomas Bata University in Zlin. TGM 5555, 760 01 Zlin. Czech Republic. E-mail: ovsik@utb.cz, stanek@utb.cz, hylova@utb.cz, manas@utb.cz, pstoklasek@utb.cz

**The presented article deals with the thermal energy influence on various types of construction steels during laser beam cutting. When the material is cut by a laser, the workpiece is subjected to intensive thermal load. Due to this influence, steels hardness is increased and the structure is changed.**

**The aim of this study is to verify how the thermal energy influences the surface layer of material during laser cutting. The influence was studied on data measured by DSI (depth sensing indentation) micro-hardness method. Each sample was subjected to cross-section from edge to the distance of 20 mm from the edge measurement. To evaluate surface layers during laser cutting, three types of steels with different carbon content 1.0038 (S235JR), 1.1203 (C55) a 1.7131 (16MnCr5) were chosen. The main objective was to determine the distance from the cutting point to the material when cutting with a laser beam, how its micro-mechanical properties and structure change or the distance from the cutting point to the component's hardening.**

**Keywords:** Laser beam, thermal influence, steels, indentation hardness, indentation modulus

### 1 Introduction

During the trimming of the material into its final shape, the changes of mechanical properties occur because of the high tensile strength. And the conventional stamping process could be uneconomical. The industrial demand and also advanced evolution in processing technology created a laser cutting as an alternative in trimming. Laser cutting is a well-established industrial process with which it is possible to cut polymeric materials, steels and also nickel super alloys. It is desirable to optimize the cut edge quality and cutting speeds. Non-contact cutting with the high quality and cost effectiveness made laser cutting as a process commonly used in the industry [1, 2].

During laser cutting of metals, a volume of the melt is created and subsequently blown out of the cut zone by an inert assist gas and a thin layer of the melt flows down the cut. This issue J. Pocorni, J. Powell, E. Deichsel, J. Frostevarg, A.F.H. Kaplan investigated. In case of 10 mm stainless steel AISI 304 (EN 1.4301) cut by fibre laser has been found in the cut front an average speed 0.4m/s the humps move down the cut, while the liquid flows at the speed of 1.1m/s. Their study developed a new experimental technique which allowed high speed imaging observation under standard cutting conditions. The decrease in cut edge quality during processing of thicker section of steel could be a consequence of hump generation [1].

A.F.M. Tahir and S.N. Aqida used as a material 22MnB5 boron steel of 1.7 mm thickness for laser cutting. Conducting laser cutting at 100 % duty cycle produced the narrowest top kerf of 0.2920 mm, middle kerf of 0.2782 mm and bottom kerf of 0.2448 and a minimum heat affected zone of 0.1589 mm. The minimum kerf and heat affected zone formation were predicted at 895 W laser power and 1923.44 mm/min cutting speed. These

showed the importance of the relationship between input parameters and heat affected zone regions and kerf width formation in laser cutting of these kind of steels [2].

Dorin Catana investigated the heat treatment with concentrated energy sources on nodular cast iron and on grey cast iron. It was found that applying the hardening with these energy sources either cathode beam or laser beam, the improvement of micro-hardness, hardness and wear resistance is obtained [3].

The influence of heat treatments with concentrated energy sources on the alloy steels investigated the same author Dorin Catana and this author studied the alloyed steels X210Cr10 and HS 18-0-1. This author's results show that this treatment leads to the improvement of the properties of the microstructure, hardness and wear resistance [4].

Other studies are concentrated on laser cutting by fibre laser and CO2 laser of metal materials and comparison of materials with each other, the influence of laser cutting conditions and the thickness of cut materials [5, 6].

This article deals with the changes in the material during laser cutting. We are concentrated especially on micro-indentation properties, which are able to describe a huge amount of material properties.

### 2 Experimental

Three types of steels with the different carbon content EN 1.0038 (S235JR), EN 1.1203 (C55), EN 1.7131 (16MnCr5), which are commonly produced and industrially processed were used.

Table 1 shows the chemical composition of the test materials according to the standard ČSN EN 10025-2:2005.

**Tab. 1** Chemical composition of tested materials.

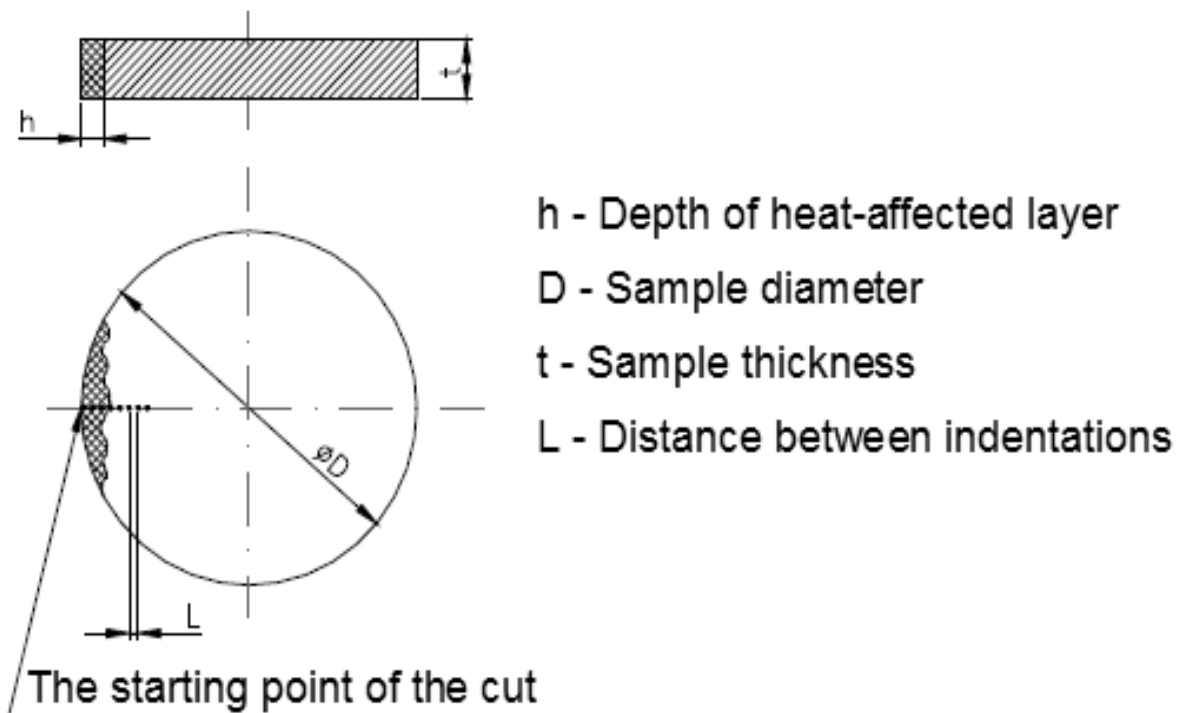
	C max.	Mn max.	Si max.	P max.	S max.	N max.	Cr max.	Mo max.	Ni max.
1.0038	0.170	1.400	-	0.045	0.045	0.009	-	-	-
1.1203	0.600	0.900	0.400	0.030	0.400	-	0.400	0.100	0.400
1.7131	0.190	1.400	0.370	0.035	0.035	-	1.100	-	-

- **Laser:**

Tested samples were prepared using a laser of TRUMPF type in the company TAJMAC-ZPS a.s., Zlin. This 2D-laser cutting machine works on the principle of „flying optics“, what means that moving laser cutting head machines the fixed workpiece on the removable machining table. Work dimensions are 1 500 × 3 000 mm and maximum pieces of the material to machine are 20 mm (construction steel), 15 mm (stainless steel) and 10 mm (aluminium) thick. The used power for preparation of tested sample was 1 475 W. The temperature of cutting process was up to 106 °C. The maximum power of this laser is 5 kW with the accuracy of 0.1 mm.

- **The preparation of tested samples:**

Tested samples cut by a laser had to be modified before the micro-hardness measurement. At first, they were cut into the dimensions (15×15) mm on a precise saw ISOMET 4 000 at speed of the cutting disc 1 900 rpm. Cut tested samples were subsequently moulded into moulding material PHENOCURE on the compression moulding machine SIMPLYMET 1 000 at the pressure 290 bar, temperature 150 °C, heating time 1.3 min, cooling time 4 min. The polishing was carried out the polishing machine ECOMET 250 when the moulded prepared tested samples were pushed on various screens at the force 30 N. The screens were alternated according the size of the seed. The speed of the polishing device head was 40 rpm. The speed of polishing machine was 100 rpm. The final part was carried out the diamond paste CAMEO with the seed size 9µm.

**Fig. 1** Tested samples

- **Micro-indentation test**

Micro-indentation tests were performed using a microindentation tester (Micro Combi Tester) (Figure 2), made by Anton Paar (Graz, Austria), according to the CSN EN ISO 14577 standard. The tip is made of diamond and its shape is that of a cube corner (Vickers). In the present study, the maximum load used was 1 N, and the loading rate (and unloading rate) was 2 N/min. The holding time was 90 s. The measurement was carried out using the depth sensing indentation (DSI) method. This method enables one to measure the force acting on the indenter,

as well as the displacement of the indenter's tip.

The indentation hardness ( $H_{IT}$ ) was calculated as maximum load ( $F_{max}$ ) to the projected area of the hardness impression ( $A_p$ ) and the indentation modulus ( $E_{IT}$ ) is calculated from the Plane Strain modulus ( $E^*$ ) using an estimated sample Poisson's ratio [7-11].

$$H_{IT} = \frac{F_{max}}{A_p} \quad (1)$$

$$E_{IT} = E^* \cdot (1 - \nu_s^2) \quad (2)$$

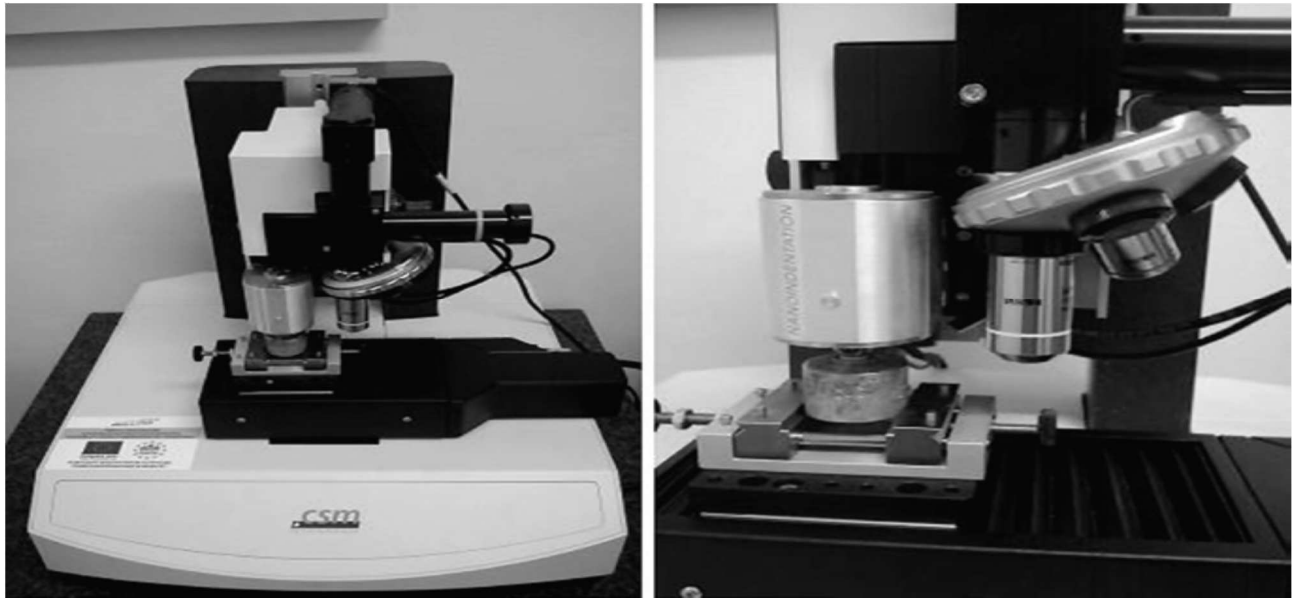


Fig. 2 Micro-indentation tester

### 3 Result and Discussion

The indentation test of hardness was measured from the cut point to the distance of 5 000  $\mu\text{m}$ .

From measured values of the indentation test of hardness of the surface layer at individual types of steels it is evident that the biggest increase of indentation hardness was at the steel 1.1203, at which the value of indentation hardness in the place of the laser cut was 6 894 MPa.

This value of indentation hardness proves, that the structure of the surface layer was created with martensite and residual austenite (Figure 6). As is evident from Figure 3, the influence of the cut point is approximately 250  $\mu\text{m}$  deep, where the stabilization of indentation hardness

on the value 2 685 MPa was. The significant increase of hardness was measured at tested steels 1.0038 and 1.7131. At steel 1.7131 indentation hardness in the cut point was 4 000 MPa and the influence touched to the distance of 200  $\mu\text{m}$ . In this area hardness around 2 725 MPa was measured. At the steel 1.0038 the value of indentation hardness in the point of cut was 3 471 MPa. The measured depth of the influence was at this steel 200  $\mu\text{m}$ , where the value of hardness was 2 195 MPa. The structure of both tested materials was created with bainite and residual austenite (Table 1). At all three tested steels with the biggest distance 250  $\mu\text{m}$  from the cut point the structure was not significantly influenced by a laser beam and it was created by perlite (the blend of ferite and cementite).

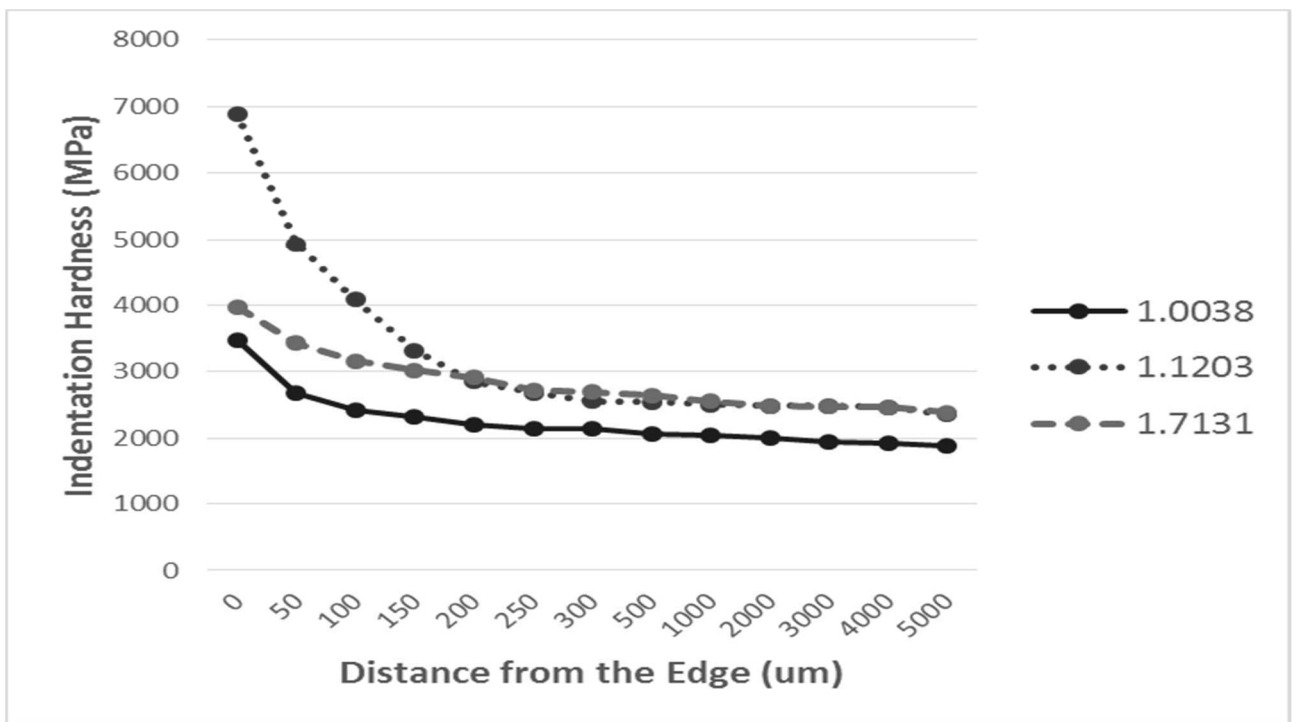


Fig. 3 Micro-indentation Hardness

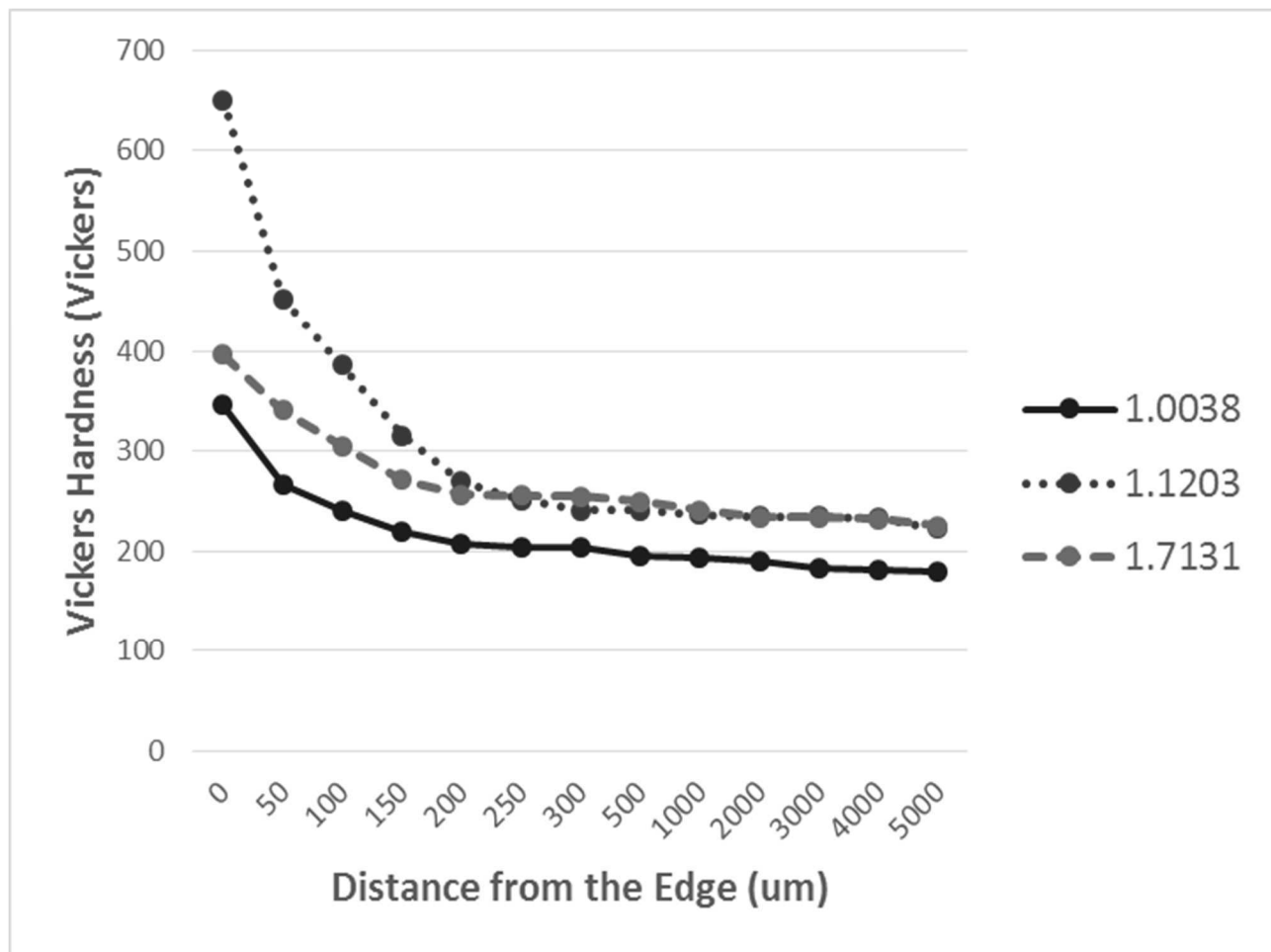


Fig. 4 Vickers Hardness

Tab. 2 Structural Component

Phases and structural components	Hardness Vickers
Austenite	120 - 180
Rough perlite	200 - 250
Soft perlite	250 - 300
Upper bainite	300 - 400
Lower bainite	400 - 550
Martensite	600 - 850

The micro-hardness measurement of structural components and phases is one of the most important tools for the metallurgy. Using micro-hardness, it is possible to identify and distinguish accurately individual structural components such as upper and lower bainite, low and high carbon martensite etc. Table 1 shows the area of individual hardness of individual structural components and phases in alloys Fe - Fe<sub>3</sub>C.

How is evident from Figure 4, the results of Vickers

hardness correspond with the results of indentation hardness. For the steel 1.1203 in the cut point hardness was measured 650 HV what matches the structure created with martensite and residual austenite see Table 2. For the steel 1.7131 in the cut point the value of hardness was 400 HV and for the steel 1.0038 the hardness in the cut point was measured 346 HV. For both materials the hardness value corresponds with the structure of bainite and residual austenite. As is visible from Figure 4, the influence of laser cutting on the surface is 200 – 250 μm deep. From this distance the material is not influenced by the laser temperature and the value of hardness in all three materials moves in the range 200 – 250 HV what corresponds with the structure of basic material (perlite).

For the tested materials the indentation modulus (Figure 5) was measured, at which the increase in the cut point was recorded. The highest value of indentation modulus was measured in the material 1.1203, in the cut point the value 397 GPa was measured. The non-influenced material showed the value of the indentation modulus 321 GPa and the basic material showed the value 264 GPa. Similar results showed the material 1.0038. The influence was in the depth of 150 μm.

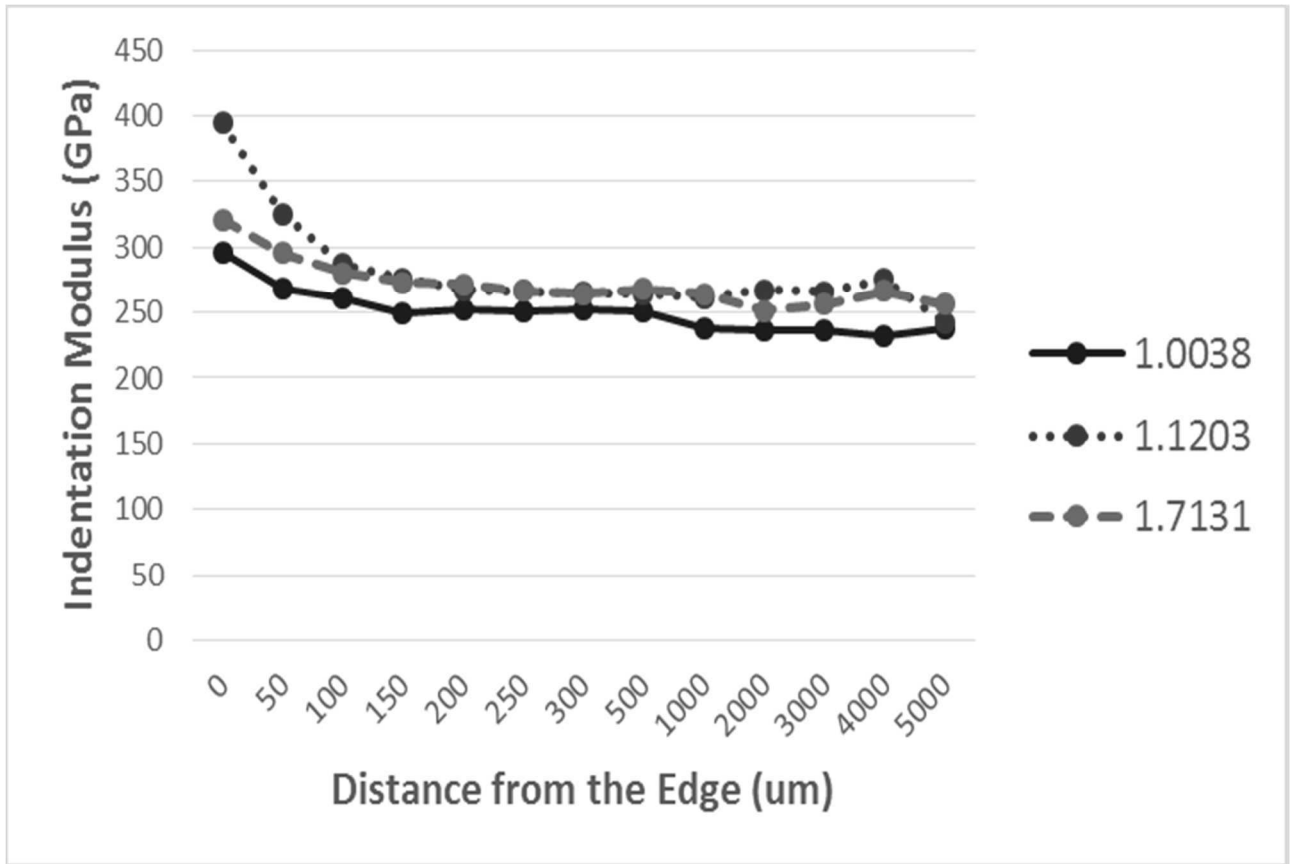


Fig. 5 Micro-indentation Modulus

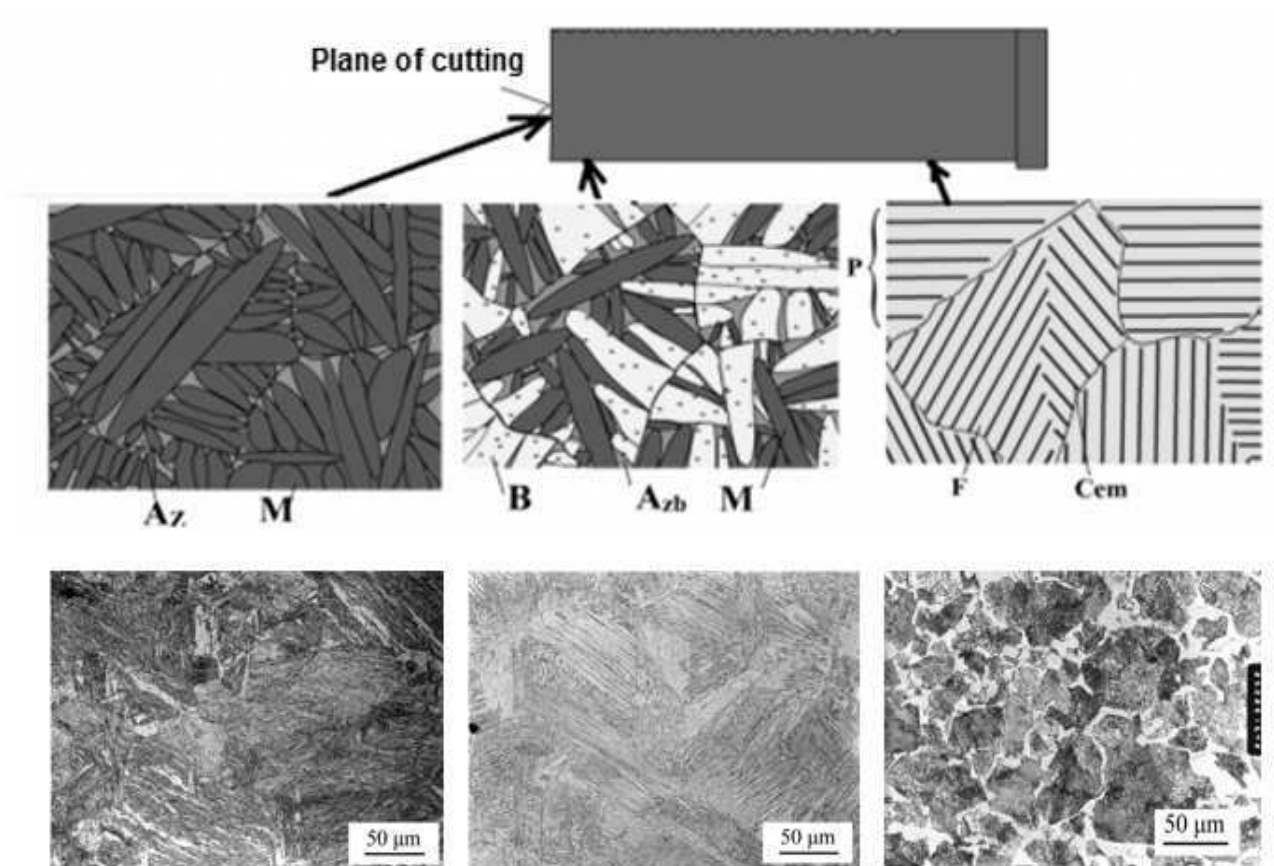


Fig. 6 Structural Component of Teste Samples

## 4 Conclusions

The presented article deals with the research of the influence of the surface layer of the metal by the laser cutting. Three types of steels with varying carbon content and differing practice usage were chosen.

From the results it is evident that tested samples cut by a laser showed in the proximity of laser cut high hardness. Highest values were measured in the material with higher carbon content 1.1203 (indentation hardness 6 894 MPa, Hardness Vickers 650 HV and indentation modulus 397 GPa). These results correspond to the structure which is created by martensite and residual austenite. Lower values of hardness and modulus in the cut point were measured in the steels with lower carbon content 1.7131 and 1.0038. These results correspond to the structure created by bainite and residual austenite. The maximum depth of the influenced layer was approximately 250 µm. After this value, hardness was not significantly changed. Micro-mechanical properties corresponded with the basic structure of perlite.

## Acknowledgement

*This work was supported by the European Regional Development Fund under the project CEBIA-Tech Instrumentation No. CZ.1.05/2.1.00/19.0376 and by the Ministry of Education, Youth and Sports of the Czech Republic within the National Sustainability Program project no. LO1303 (MSMT-7778/2014). Moreover, it was supported by the Internal Grant Agency of TBU in Zlín: no. IGA/FT/2019/002.*

## References

- [1] POCORNI, J., POWELL, J., DEICHSEL, E., FROSTEVARG, J., KAPLAN, A.F.H. (2017). Fibre laser cutting stainless steel: Fluid dynamics and cut front morphology. In: *Optics and Laser Technology*, Vol. 87, pp. 87-93.
- [2] TAHIR, A.F.M., AQIDA, S.N. (2017). An investigation of laser cutting quality of 22MnB5 ultra high strength steel using response surface methodology. In: *Optics and Laser Technology*, Vol. 92, pp. 142-149.
- [3] CATANA, D. (2017). Influence of heat treatments with concentrated energy sources on the cast irons mechanical properties. In: *Nonconventional Technologies Review*, pp. 11-17.
- [4] CATANA, D. (2017). Influence of heat treatments with concentrated energy sources on the alloy steels mechanical properties. In: *Nonconventional Technologies Review*, pp. 22-29.
- [5] ORISHICH, A.M., MALIKOV, A.G., SHULYATYEV, V.B., GOLYSHEV, A.A. (2014). Experimental comparison of laser cutting of steel with fiber and CO2 lasers on the basis of minimal roughness. In: *Physics Procedia*, Vol. 56, pp. 875-884.
- [6] STELZER, S., MAHRLE, A., WETZIG, A., BEYER, E. (2013). Experimental investigations on fusion cutting stainless steel with fiber and CO2 laser beams. In: *Physics Procedia*, Vol. 41, pp. 399-404.
- [7] OVSİK, M., SENKERIK, V., MANAS, D., STANEK, M. (2016). The behaviour of cross-linking filled PBT measured by nano-hardness. In: *MM Science Journal*, pp. 1110-1113.
- [8] EPERJESI, S., MATVIJA, M., BARTOSOVA, M., FECKO, D., PRIBULOVA, A. (2017). Effect of Heat Treatment Conditions on Micro Structure of Cast Iron. In: *Manufacturing Technology*, Vol. 17, pp. 29-33.
- [9] MULLER, M. (2017). Effects of Aluminium Microparticles and Surface Treatment of AlCu4Mg on Mechanical Properties of Adhesive Bond Strength. In: *Manufacturing Technology*, Vol. 17, pp. 66-71.
- [10] KUBISOVA, M., PATA, V., SYKOROVA, L., KNEDLOVA, J. (2017). Influence of laser beam on polymer material. In: *Manufacturing Technology*, Vol. 17, No. 5, pp. 742-746.
- [11] MANAS, D., OVSİK, M., MIZERA, A., MANAS, M., HYLOVA, L., BEDNARIK, M., STANEK, M. (2018). The effect of irradiation on mechanical and thermal properties of selected types of polymers, In: *Polymers*, Vol. 10, No. 2, pp. 158.